

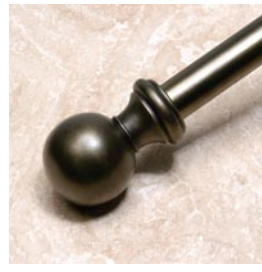
Architrave



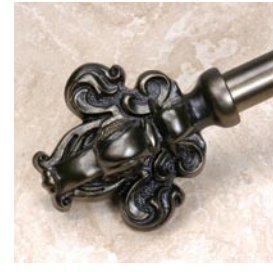
PINO FINIAL, 1"
4"L 3"H



POMEGRANATE FINIAL, 1"
5.75"L 4"H



AXIS FINIAL, 1.5"
5"L 3"H



QUATREFOIL FINIAL, 1.5"
7.25"L 6.25"W



VASE FINIAL, 1.5"
5.25"L 3"H



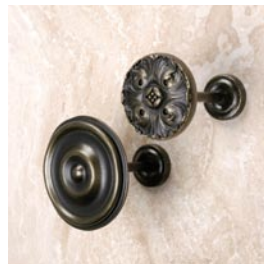
TURBAN FINIAL, 1.5"
5.5"L 4"H



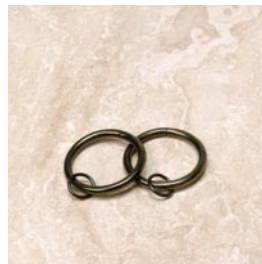
CALIZ FINIAL, 1.5"
8.25"L 5.5"H



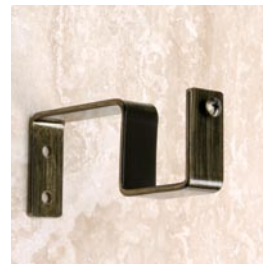
RADIUS ROSETTE (left)
2.25" diameter
FLORAL ROSETTE (right)
1" diameter



RADIUS TIEBACK (top)
4.5" diameter
FLORAL TIEBACK (bottom) 2.75"
diameter
both tiebacks have 3.5" extension



RINGS
1.5" diameter
2" diameter



STANDARD,
EXTENDED BRACKET
Standard bracket 1" and 1.5" projects 3.5"
Extended bracket 1" and 1.5" projects 5.5"

AVAILABLE FINISHES



ANTIQUÉ GOLD



EARTH RUST



WATERMARK SILVER



ANTIQUÉ

ROBERT ALLEN

DRAPERY HARDWARE

HARDWARE FEATURES

- Hand-Draw Traverse System Features:
 - One-way and center draw traverse kits available in 4' and 8' lengths.
 - 1" traverse rod cannot be used with finials. Can only be utilized with end caps or with inside mounts.
 - Kits include: aluminum traverse rod, 16 glides for 4' and 32 for 8', 1 master carrier with overlap arm for one-way draw and pair of master carriers with overlap arm and standard arm for center draw, aluminum, top-mount brackets (2 for 4', 3" for 8') and 2 end stops.
 - 1" brackets have a 3.5" projection and 1.5" brackets have a 3.75" projection.
 - 1" rod includes nylon glides, 1.5" rod includes roller glides with ball bearings. Both provide for smooth and easy movement of draperies.
 - One-way and center draw feature reversible master carrier arm(s) (standard and overlap) so that overlap can be left over right or right over left.
- Collection includes functional accessories.
- Color variation in the finishes may vary from piece to piece; it is to be expected and appreciated.
- This collection is made of resin and metal.

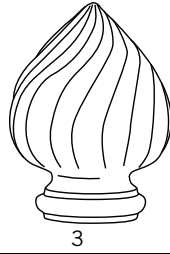
Architrave



1



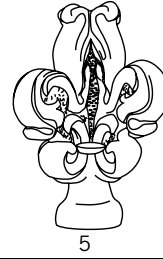
2



3



4

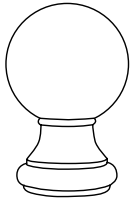


5

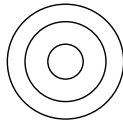


6

FINIALS



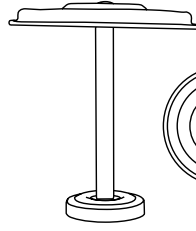
7



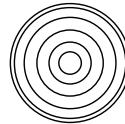
8



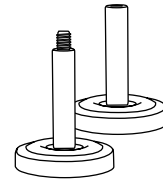
9



10



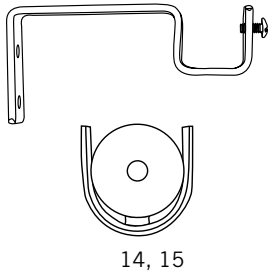
11



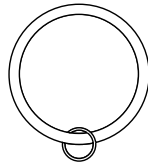
12, 13

ROSETTES

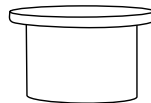
TIEBACKS



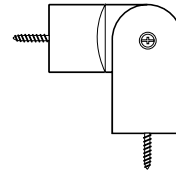
14, 15



16



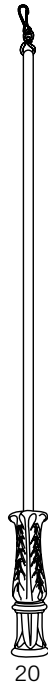
17



18



19

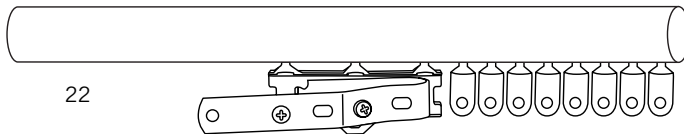


20

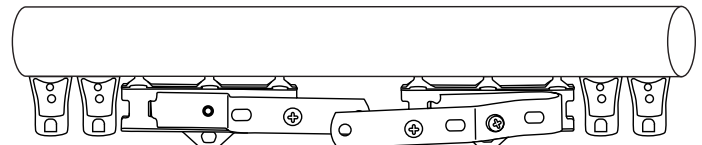
BRACKETS

OTHER

21



22



RODS

FINIALS

- 1 Pomegranate finial, 1" (5.75"L 4"H)
- 2 Pino finial, 1" (4"L 3"H)
- 3 Turban finial, 1.5" (5.5"L 4"H)
- 4 Caliz finial, 1.5" (8.25"L 5.5"H)
- 5 Quatrefoil finial, 1.5" (7.25"L 6.25"W)
- 6 Vase finial, 1.5" (5.25"L 3"H)
- 7 Axis finial, 1.5" (5"L 3"H)

ROSETTES

- 8 Radius (2.25" diameter)
- 9 Floral (2" diameter)

TIEBACKS

- 10 Radius tieback (3.5" extension, 4.25" diameter)
- 11 Floral tieback (3.5" extension, 2.75" diameter)
- 12 Short post - male (2"L x 1.5" diameter)
- 13 Short post - female (2.4"L 1" diameter)

BRACKETS

- 14 Standard bracket (1 and 1.5" projects 3.5")
Extended bracket (1 and 1.5" projects 5.5")
- 15 Inside Mount (available for 1" and 1.5" rods)

OTHER

- 16 Ring (1.5" and 2" diameter)
- 17 Endcap (available for 1" and 1.5" rods)
- 18 Corner angle (2.75"L 1" diameter) (4"L 1.5" diameter)
- 19 Connector (1" or 1.5": 12"L)
- 20 Wand (40"L)

RODS

- 21 1" and 1.5" standard rods (available in 4' and 8' lengths)
- 22 1" and 1.5" hand-draw traverse rods are sold as kits (available in 4' and 8' lengths) Available in one-way draw and center draw traverse options

*See price list for further details on traverse kits

To adjust rod length, please follow general installation instructions for shortening metal rods.

ROBERT ALLEN
DRAPERY HARDWARE

For customer service call:
US 800.333.3777
CANADA 800.363.3020
EUROPE +44 (0) 1494 414741