

# Heritage

---



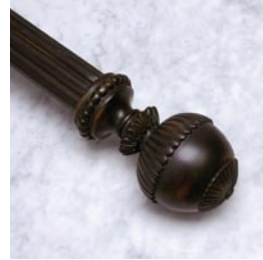
ARTICHOKE FINIAL, 1.5"  
5.75"L 3.5"H



CAPITAL FINIAL, 1.5"  
5"L 3"H



CAROUSEL FINIAL, 2.25"  
4.5"L 4.75"H



NEWEL FINIAL, 2.25"  
7.5"L 4.75"H



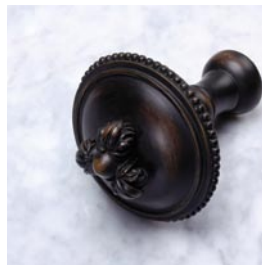
TROPHY FINIAL, 2.25"  
3.25"L 3.25"H



END CAP  
2.25" diameter only



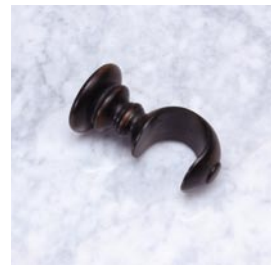
MEDALLION TIEBACK  
4" diameter, 4.75" extension



VICTOIRE TIEBACK  
4.25" diameter, 4" extension



RING  
1.75" ring for 1.5" diameter  
2.5" ring for 2.25" diameter



STANDARD BRACKET  
Projects 3.5" for 1.5"  
Projects 4.25 for 2.25"

---

## AVAILABLE FINISHES



EMPIRE GOLD

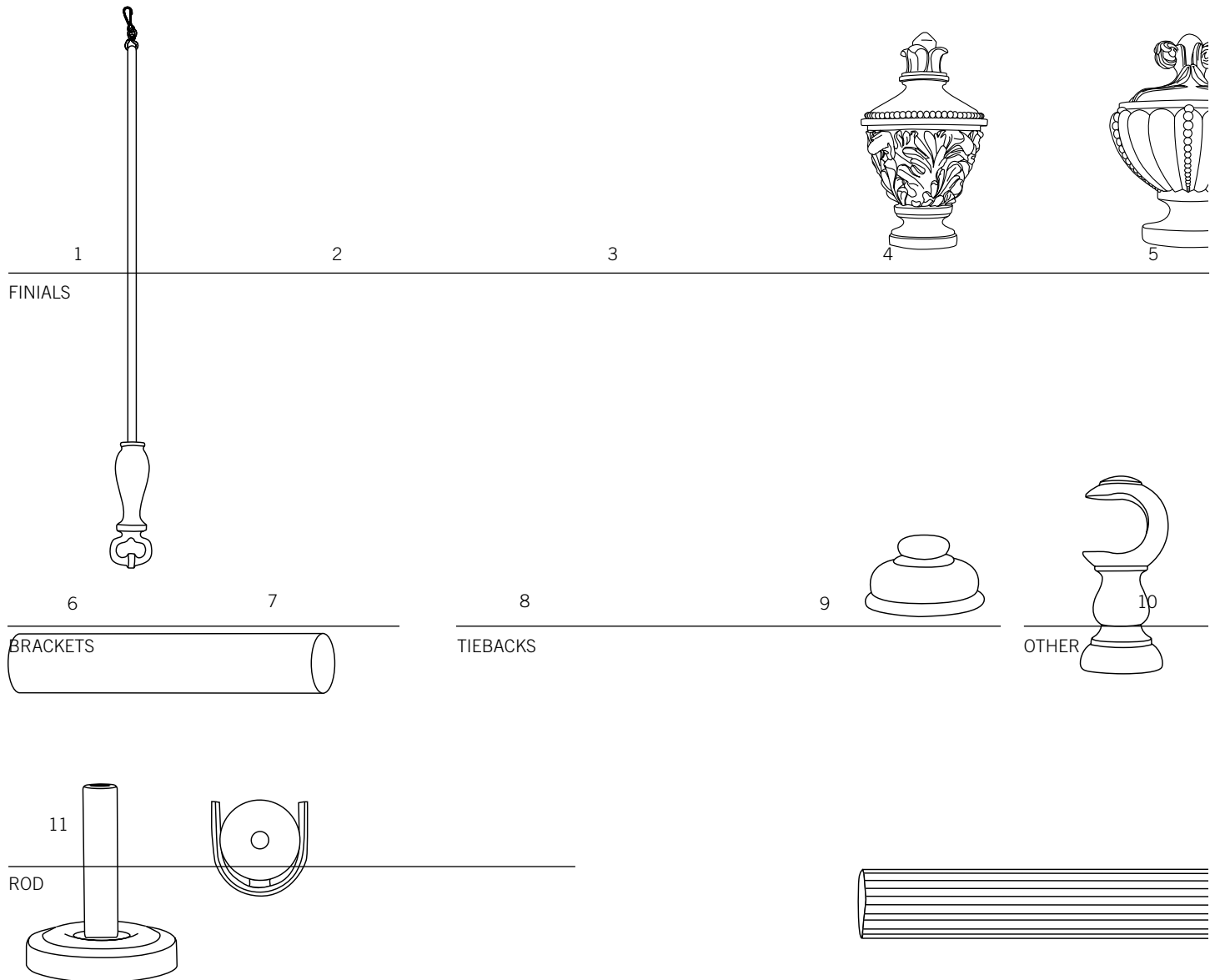


VINTAGE NOIR



MAHOGANY

# Heritage



## FINIALS

- 1 Capital finial, 1.5"\* (5"L 3"H)
- 2 Trophy finial, 2.25" (6"L 5"H)
- 3 Newel finial, 2.25" (7.5"L 4.75"W)
- 4 Carousel finial, 2.25" (4.5"L 4.75"H)
- 5 Artichoke finial, 1.5"\* (5.75"L 3.5"H)
- 6 Endcap (available for 2.25" diameter)

*\*An adapter is pre-packaged with the Artichoke and the Capital finials to accommodate a 2.25" rod*

## BRACKET

- 7 Standard bracket (1.5" projects 3.5" and 2.25" projects 4.25")

## TIEBACKS

- 8 Victoire tieback (4.25" diameter, 4" extension)
- 9 Medallion tieback (4" diameter, 4.75" extension)

## OTHER

- 9 Ring (with eyelet, available for 1.5" and 2.25" diameter rods)

## ROD

- 11 1.5" and 2.25" fluted rods (available in 4' and 8' lengths)

Finials and tiebacks are made from resin. All other materials are made from wood.

*To adjust rod length, please follow general installation instructions for shortening wooden rods*

**ROBERT ALLEN**  
 DRAPERY HARDWARE

For customer service call:  
 US 800.333.3777  
 CANADA 800.363.3020  
 EUROPE +44 (0) 1494 414741