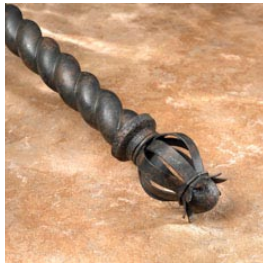


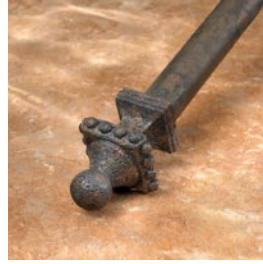
Toscana



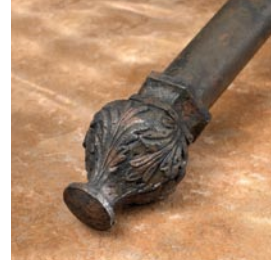
BELLA FINIAL, 1.5"
4.25"L 3"H



CAMPAGNA FINIAL,
1.5"
6.5"L 4.5"H



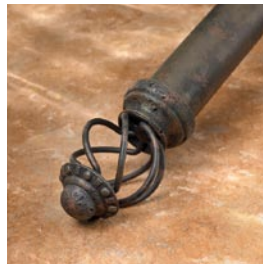
PIAZZA FINIAL, 1.5"
4.5"L 3"H



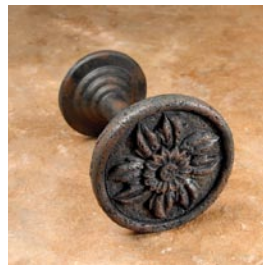
FIRENZE FINIAL, 2"
5.5"L 4"H



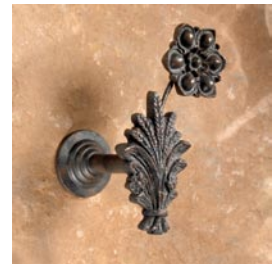
SAXON FINIAL, 1.5"
Small: 4.5"L 3"H
Large: 5.5"L 3.5"H



LOGGIA FINIAL, 2"
5"L 3"H



ROSETTE TIEBACK
4.5" extension 3.25"
diameter



FLORAL TIEBACK
4.5" extension 4" diameter



RING
1.5" ring is 2" diameter
2" ring is 2.5" diameter



STANDARD AND
EXTENDED BRACKET
Standard bracket 1.5"
projects 4.25" and 2"
projects 4.5"
Extended bracket 1.5"
projects 6" and 2"
projects 6.5"



SWING ARM
.5" diameter 27.5"L

AVAILABLE FINISHES



SIENNA



EARTH RUST



ITALIAN GOLD



ANTIQUE

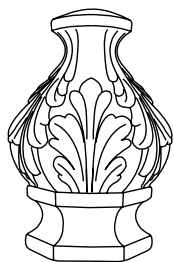


LIMESTONE

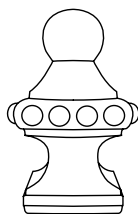
ROBERT ALLEN

DRAPERY HARDWARE

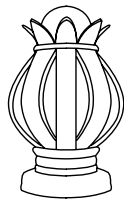
Toscana



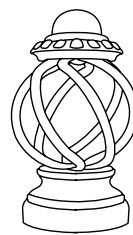
1



2



3

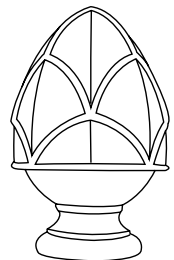


4

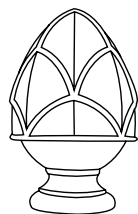


5

FINIALS



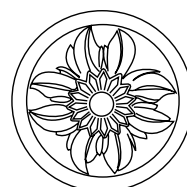
6



7

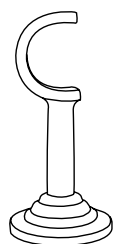


8

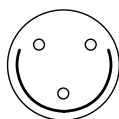


9

TIEBACKS



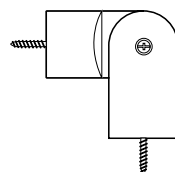
10



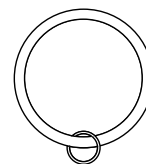
11



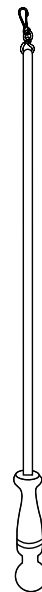
12



13



14



15

BRACKETS

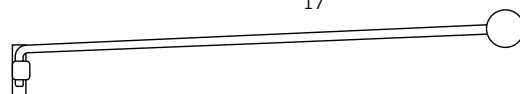
OTHER



16



17



18

RODS

FINIALS

- 1 Firenze finial, 2" (5.5"L 4"H)
- 2 Piazza finial, 1.5" (4.5"L 3"H)
- 3 Bella finial, 1.5" (4.25"L 3"H)
- 4 Loggia finial, 2" (5"L 3"H)
- 5 Campagna finial, 1.5" (5.5"L 3.5"H)
- 6 Saxon large finial, 2" (5.5"L 3.5"H)
- 7 Saxon small finial, 1.5" (4.5"L 3"H)

TIEBACKS

- 8 Floral tieback (4.5" extension 4" diameter)
- 9 Rosette tieback (4.5" extension 3.25" diameter)

BRACKETS

- 10 Standard and Extended brackets
(1.5" Standard bracket projects 4.25")
(1.5" Extended bracket projects 6")
(2" Standard bracket projects 4.5")
(2" Extended bracket projects 6.25")
- 11 Inside Mount (available for 1.5" and 2" rods)

OTHER

- 12 Endcap (available for 1.5" and 2" rods)
- 13 Corner angle (available for 1.5" rod only. 4"L)
- 14 Ring (available for 1.5" and 2" rods. Ring for 1.5" rod is 2" diameter and ring for 2" rod is 2.5" diameter)
- 15 Wand (40"L)

RODS

- 16 Plain rod (available in 1.5" and 2" diameters; 4' and 8' lengths)
- 17 Rope rod (available in 1.5" and 2" diameters; 4' and 8' lengths)
- 18 Swing arm (.5" diameter 27.5"L)

This collection is made of resin, metal and wood.

To adjust rod length, please follow general installation instructions for shortening wooden rods.

ROBERT ALLEN
DRAPERY HARDWARE

For customer service call:
US 800.333.3777
CANADA 800.363.3020
EUROPE +44 (0) 1494 414741