

# leather



Oasi  
polished nickel, black



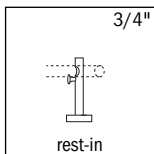
Garda  
polished nickel, bulgar red



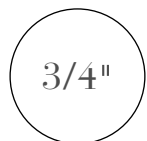
Garda  
polished nickel, black



Garda  
polished nickel, tan



Pictured bracket is available in single or double format. Pass through bracket is only available when used in combination with standard rest-in brackets.



available rod diameter

ROBERT ALLEN

PRESENTS

B L ● M E

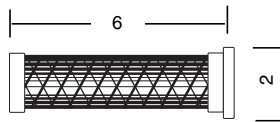
# leather

## measurements

### finials

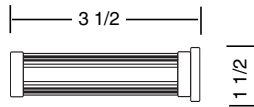


Garda

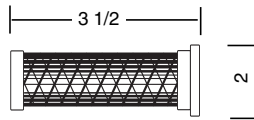


Oasi

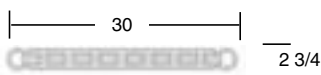
### holdbacks



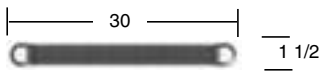
Garda, holdback



Oasi, holdback

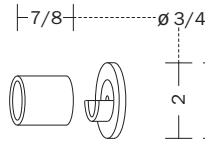


laced leather holdback

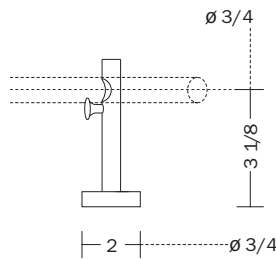


braided leather holdback

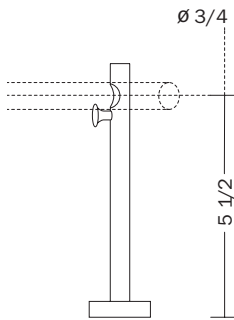
### brackets



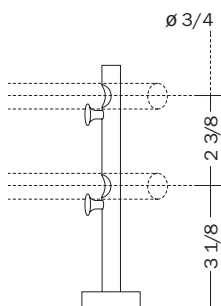
inside mount bracket



rest-in bracket

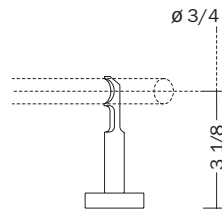


rest-in bracket extended

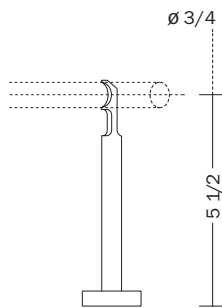


double rest-in bracket

### brackets

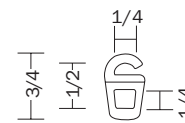


pass-through bracket

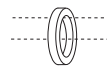


pass-through bracket extended

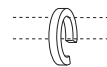
### accessories



eyelet hook



standard ring



c-ring



leather ring



braided leather ring

∅ = diameter of rod

All measurements above are listed in inches